

Analysis of Medical Imagery

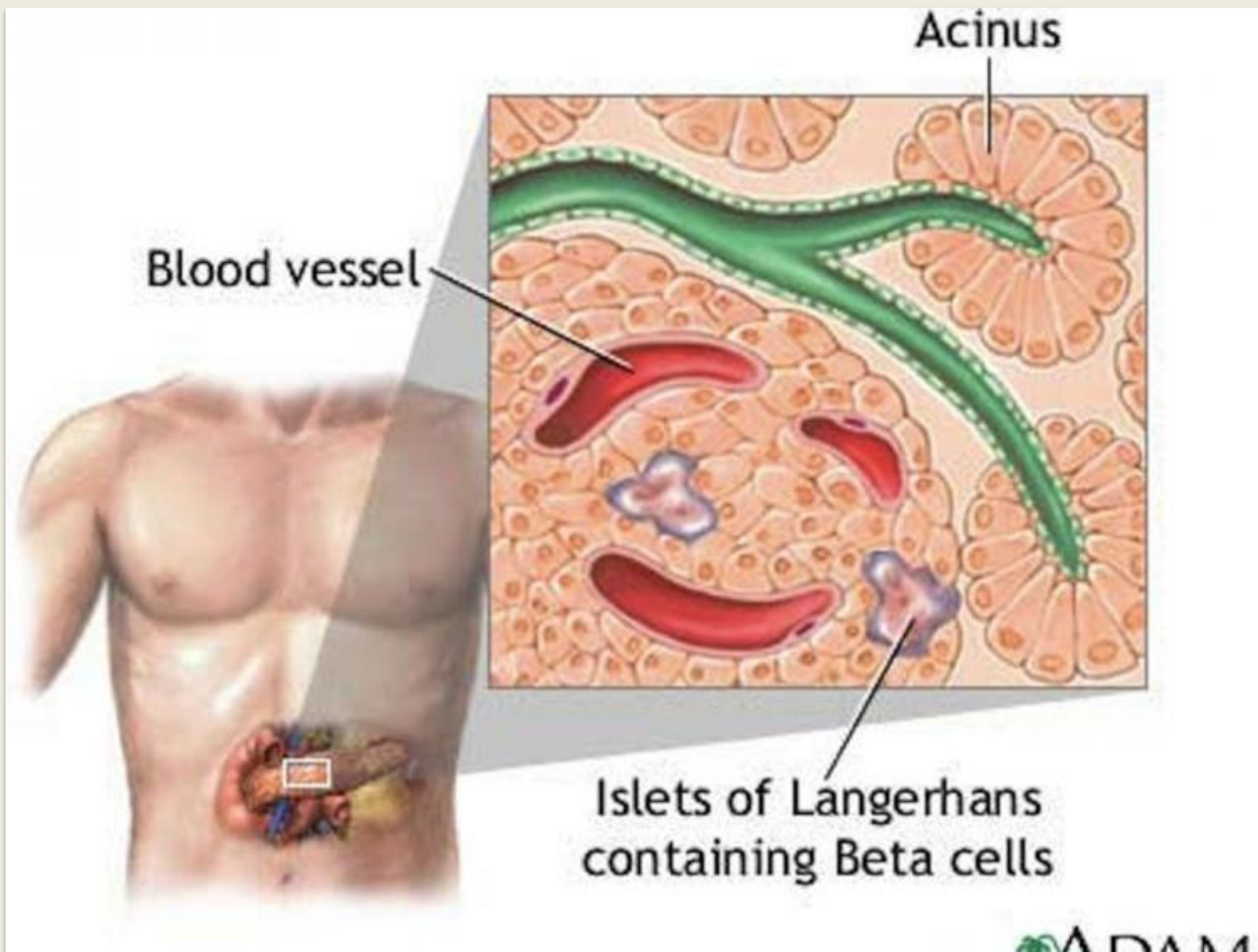
Manohar Kuse

Outline of Talk

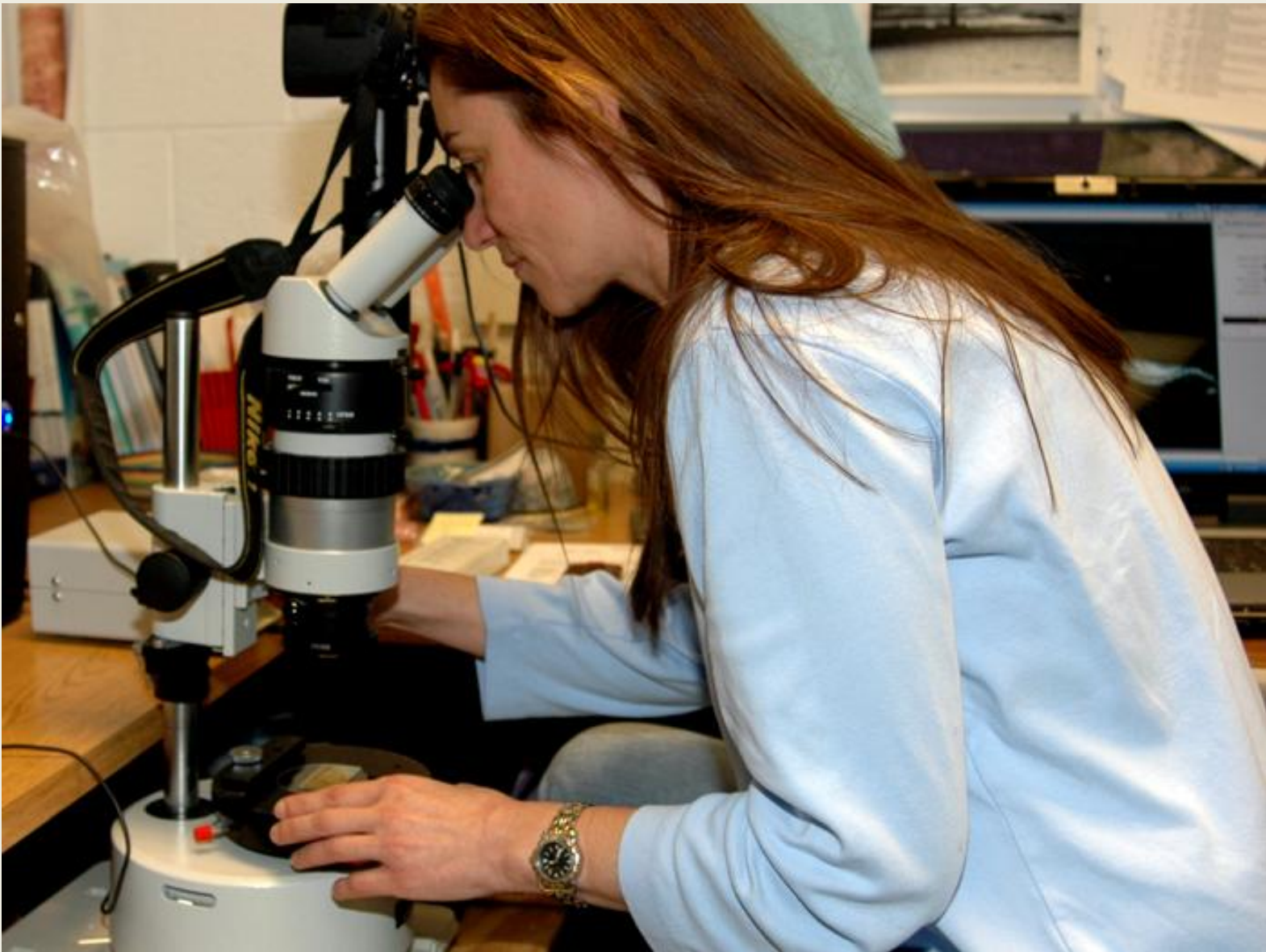
- My Research
 - Biological Background
 - Why it was important
 - How it is helping
- Applying for Internship
 - How “I” did it
 - How “you” can do it – 1
 - How “you” can do it – 2

My Research

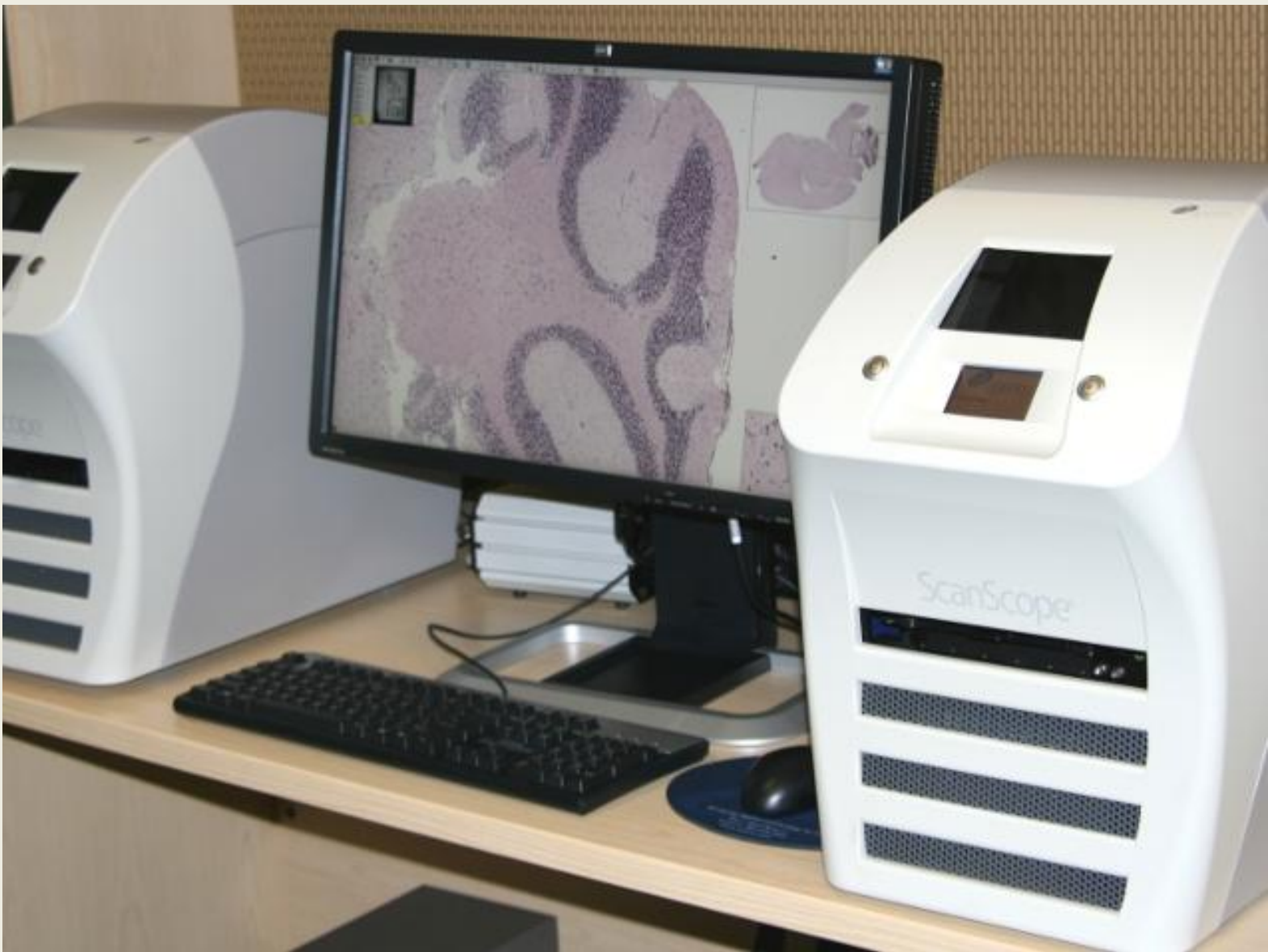
Towards Diabetes Free World : Automatic Analysis of Microscopic Slides



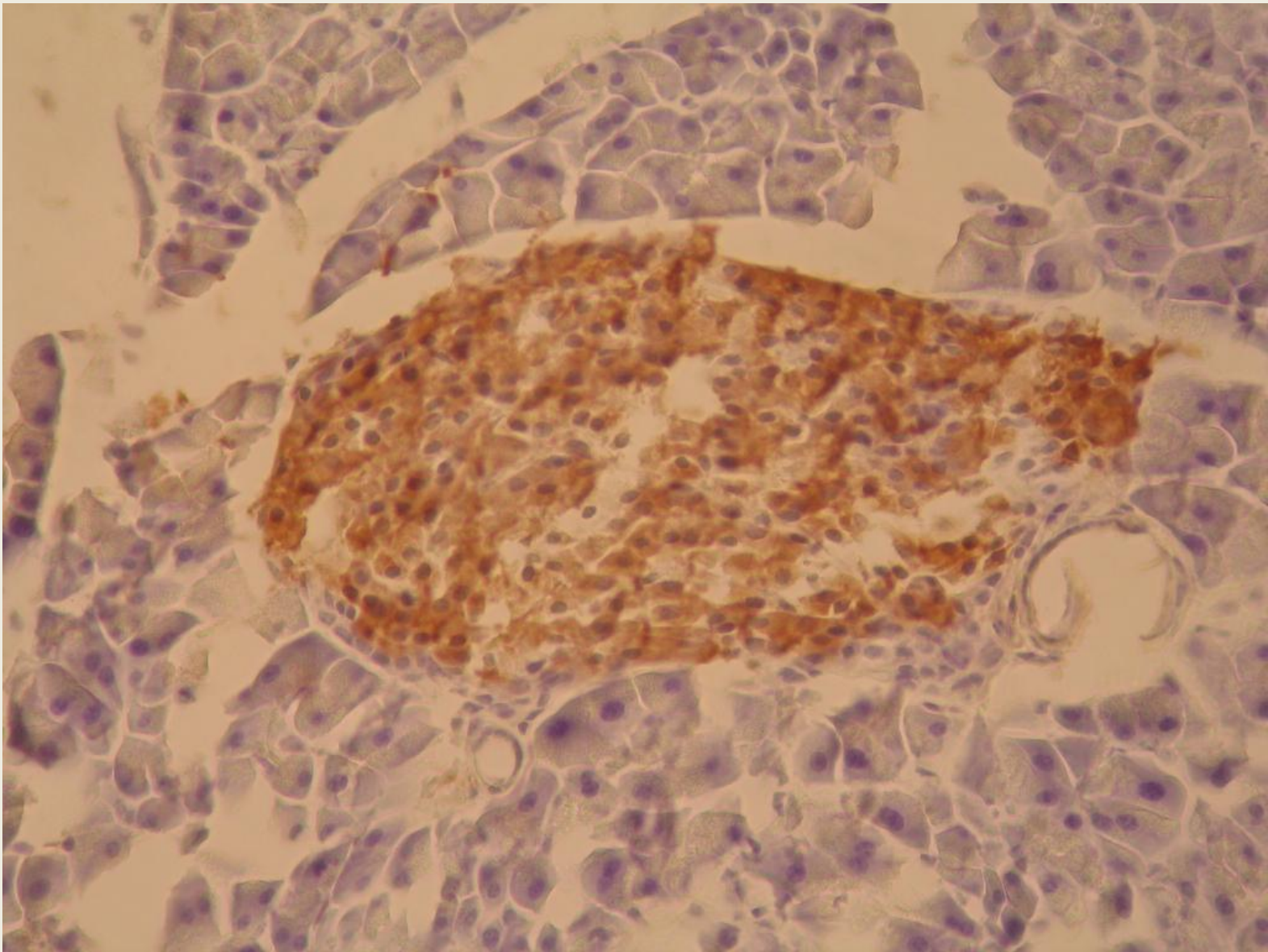
Beta Cells in Human Body



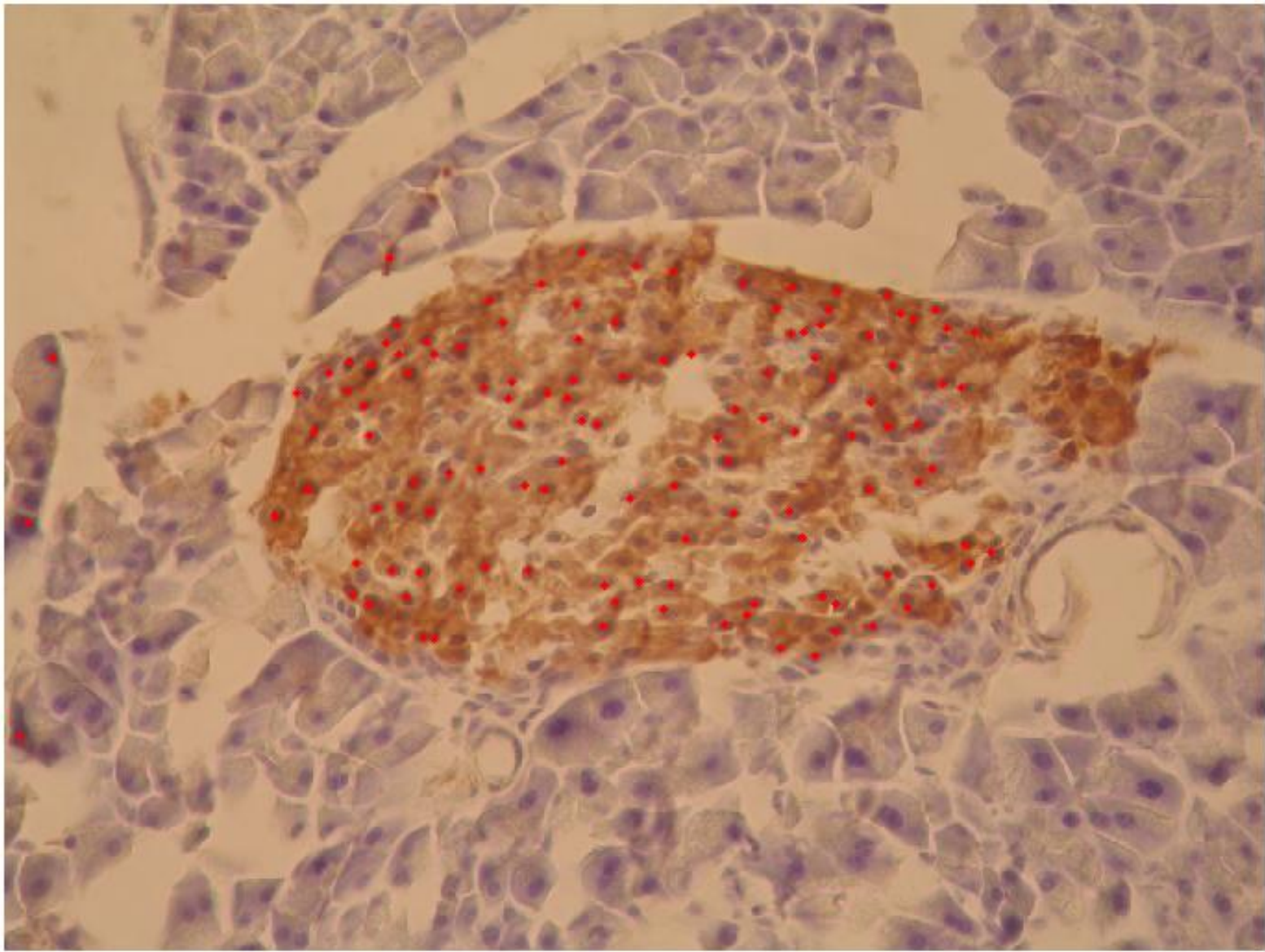
Microscopic Slide Preparation and Observation



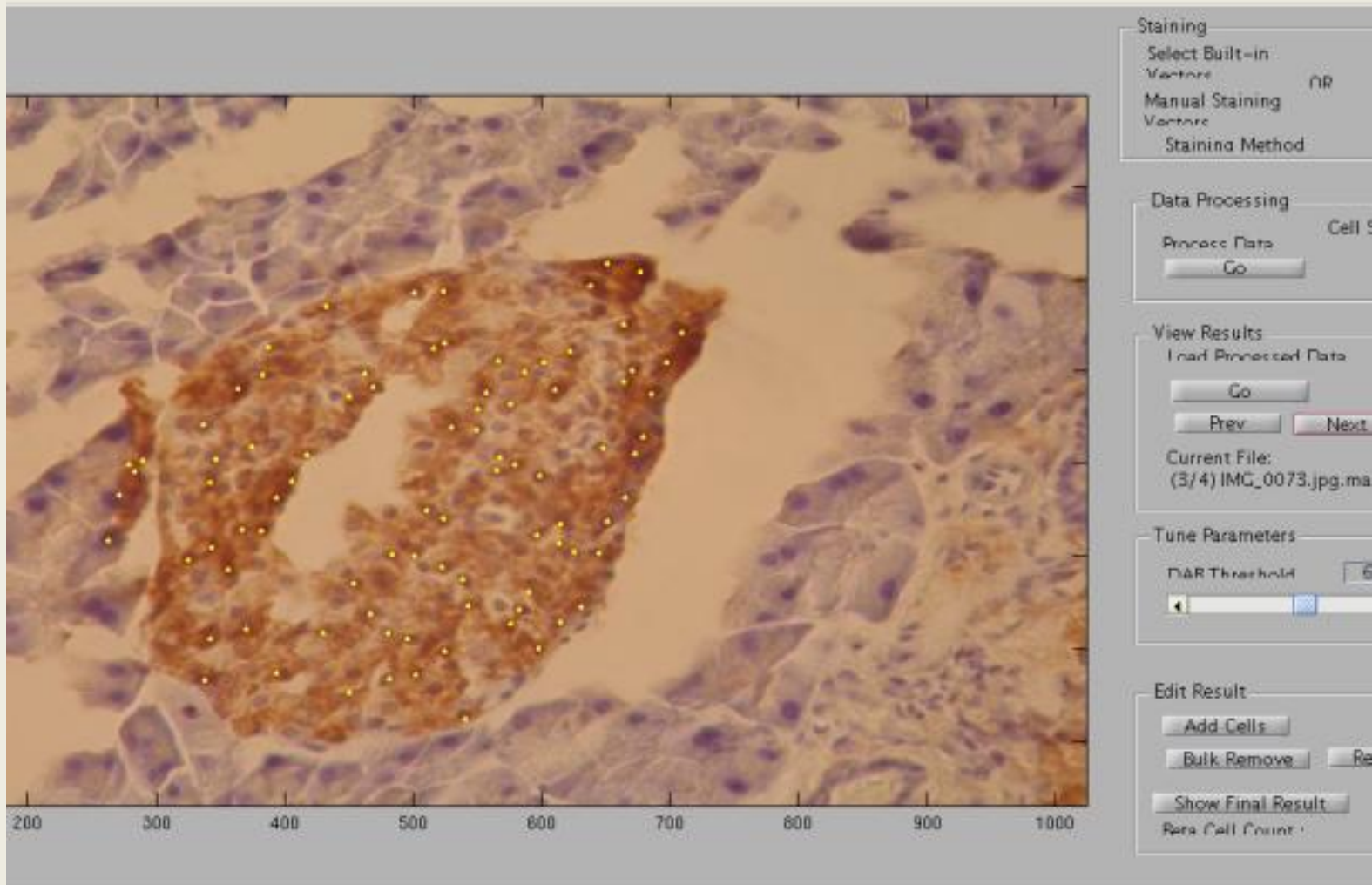
Digital Slide Scanners



Sample Beta Cell Slide



Result of Automatic Marking



The LIPSyM Software. In use at Life Science Department,
University of Warwick, UK

Software Tool -- LIPSyM

<http://www2.warwick.ac.uk/fac/sci/dcs/research/combi/projects/bic/lipsym>

<http://bit.ly/rW2AnA>

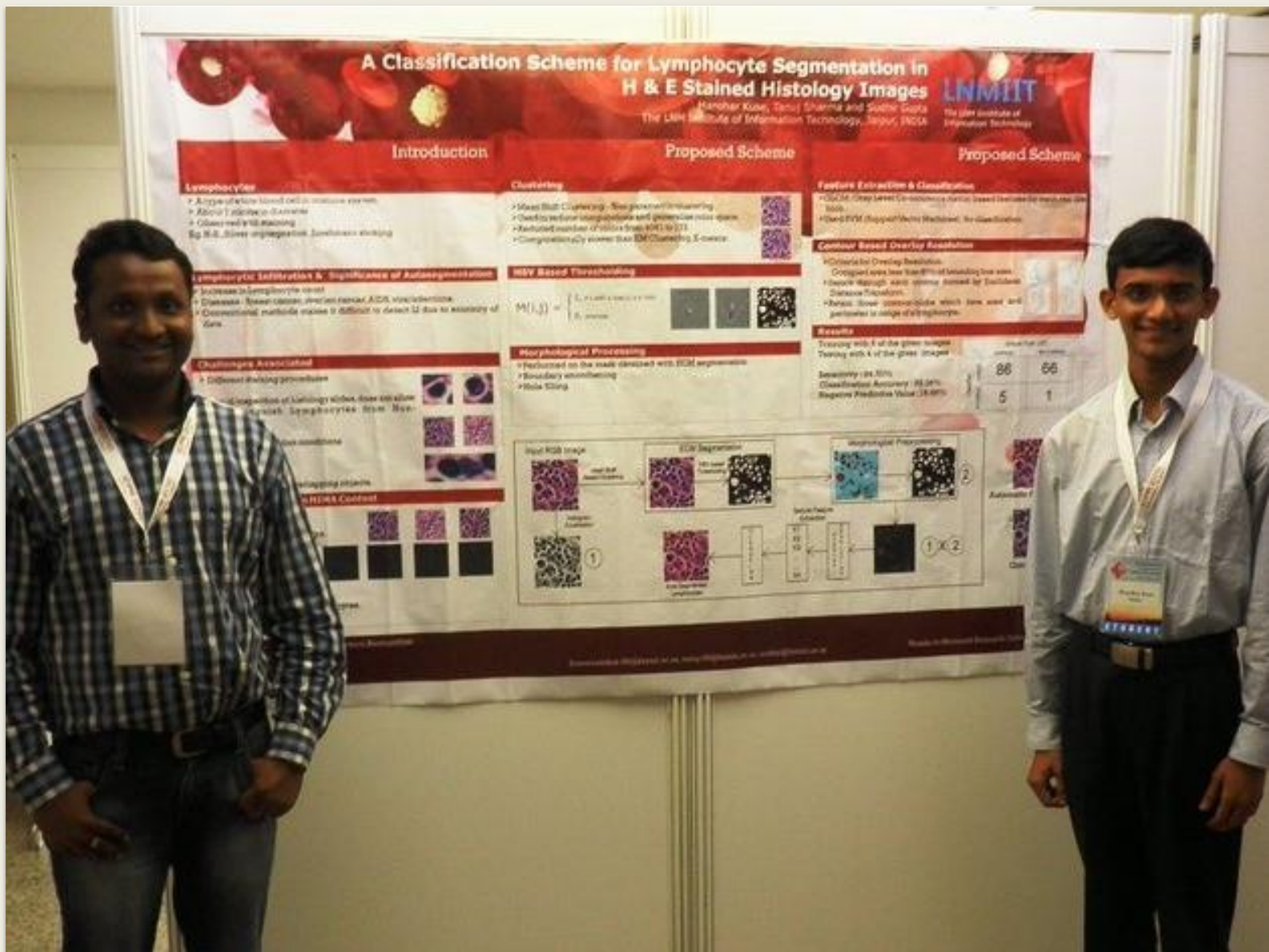


"Local Isotropic Phase Symmetry Measure for Detection of Beta Cells and Lymphocytes"

14th International Conference on Medical Image Computation and Computer Assisted Intervention (MICCAI)

Toronto, Canada Sep 2011

Applying for an Internship



@ ICPR-2010 in Istanbul, Turkey. Aug 2010

SenoCAD Research, The Netherlands



The University of Warwick, England

Strategies for Applying for Internship

- Contact through a conference
- Contact through web search
- Apply to internship programs
 - Eg. SURGE (IIT, Kanpur)
- Contact through a faculty reference

Contact through a Conference

- Do research project with faculty at LNMIIT
- Publish this as a paper in a conference
- Attend conference
 - LNMIIT might fund your travel
- Approach people at conference for your internship

Contact through web search (Direct Contact)

- Identify your field of interest
 - Make sure, you have made some project in this field
- Look for people & labs in this field
 - Can be found with simple google search
 - Listing in related conferences
- Contact these people
 - With a CV
 - Cover letter

Start Working **TODAY**.....!

Thanks 😊

swaroopcool21@gmail.com

<http://kusemanohar.wordpress.com>